

<b>WinFrog Device Group:</b>	<b>OUTPUT</b>
<b>Device Name/Model:</b>	<b>RTCM Multiple</b>
<b>Device Manufacturer:</b>	
<b>Device Data String(s) Output to WinFrog:</b>	NONE
<b>WinFrog Data String(s) Output to Device:</b>	RTCM 104 differential correction telegram
<b>WinFrog Data Item(s) and their RAW record:</b>	Data Output                      452

**DEVICE DESCRIPTION:**

This driver allows you to output RTCM differential corrections on the selected port. WinFrog does not compute the corrections – they must be input into WinFrog. You may select up to four sources of RTCM corrections and assign priorities and time out times to determine which source will be output. Individual reference stations may also be selected.

***DEVICE CONFIGURATION INSTRUCTIONS***

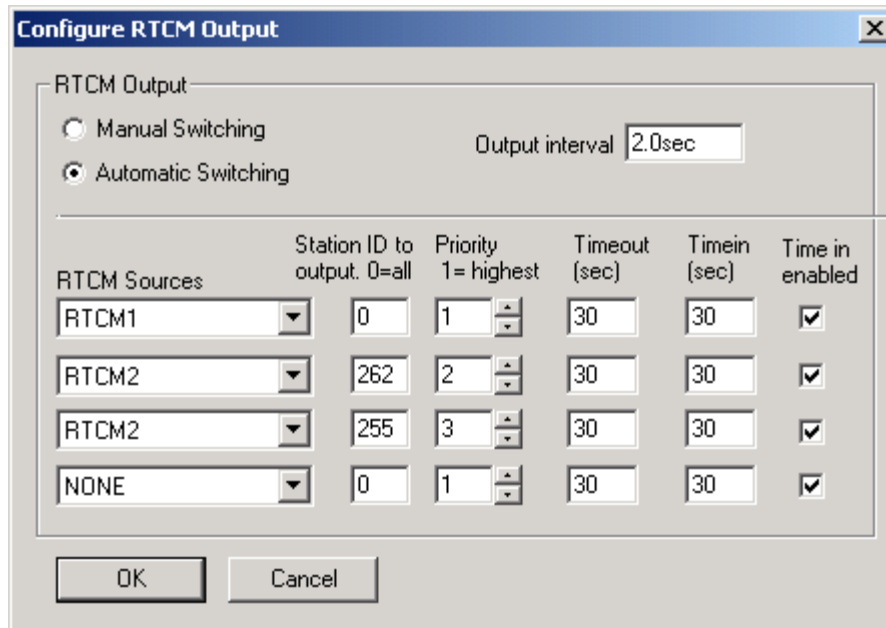
---

**WINFROG I/O DEVICES > EDIT I/O:**

Serial  
Configurable Parameters

**WINFROG I/O DEVICES > CONFIGURE DEVICE:**

This device must be configured at the I/O Device window level. In the I/O Devices window, click the device name to select it, then right-click and select Configure Device. The Configure RTCM Output dialog box is shown below.



### Manual Switching

Selecting this option only allows you to select one source (by device name) for output. Data will be output at the specified interval, but only if new data is received. If there is no new data, then no data will be output. The timeout and time in have no effect on this option.

### Automatic Switching

This option allows you to select up to four sources of RTCM corrections and prioritize them. The one with the highest priority (lowest number) that has not timed out will be output on the specified port.

### Output Interval

This is the minimum output interval of data. If no new data is received from the source, then this driver will not output data. You can override this by selecting the automatic switching and setting a time out value. Coast Guard beacons output the satellite corrections in several messages, therefore in order to receive the corrections for all the available satellites this value must be set small (2 to 3 seconds).

### RTCM Sources

Displayed here is a list of all the RTCM sources or devices that have been set in WinFrog. Select the one you wish to output on the selected port. If automatic switching has been enabled then up to four may be selected. For any row not used, set the device name to "None" and the other options on this row have no effect.

### Station Id

Enter the reference station ID whose data you wish to output. Enter 0 to output all the stations available from this device.

**Priority**

Only applies to automatic switching. Enter the desired priority of each source. The numbers must start with 1 and increment by one with no duplications. The order they are in by row does not matter.

**Timeout**

Only applies to automatic switching. If data is not received from the specified source for this length of time, then output will switch to the next highest priority source.

**Time In / Time in enabled**

If a source has timed out and the checkbox is selected, WinFrog will monitor this source for activity. If new data is received for the period specified then this source will time in and be available for output over a lower priority source.

**WINFROG VEHICLE > CONFIGURE VEHICLE DEVICES > DEVICE DATA ITEM > EDIT:****Data item: OUTPUT, RTCM Multiple, DATA OUTPUT**

There is no edit or configuration option available for this data item. However, the DATA OUTPUT data item must be added to a vehicle in order for data (452 record) to be placed into the raw data file.